

CERTIFICATE OF LOCATION OF GOVERNMENT CORNER

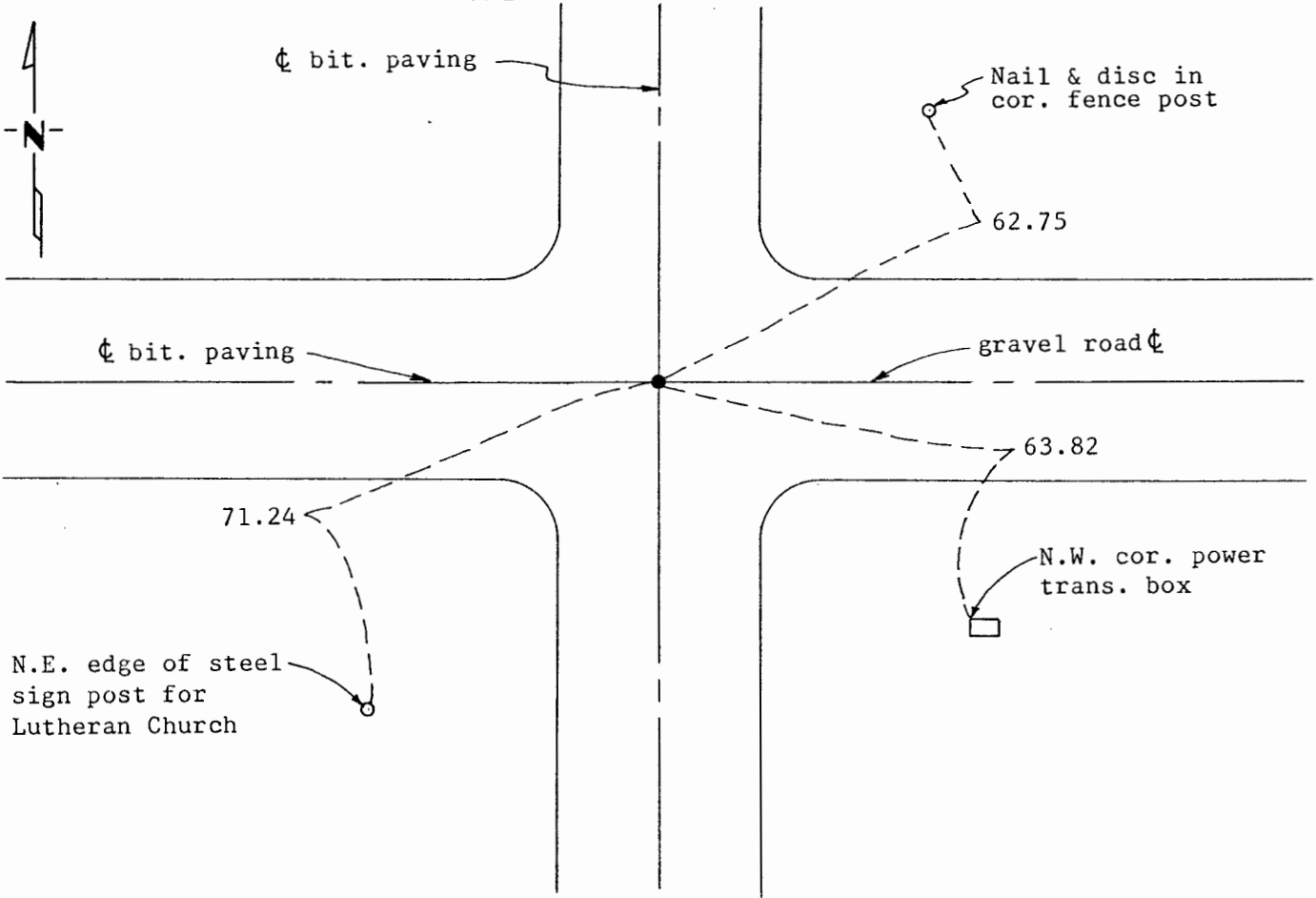
Southwest Corner of Section 10, Township 108 N., Range 42 W., 5th P.M.

STATE OF MINNESOTA, County of Murray

At the corner location shown on the sketch:

- On 12-14-87 found a P.K. Nail in bituminous paving in agreement with
DATE previous ties.
- left monument as found, lowered monument, removed monument (explain)
- On _____ placed a _____
DATE

SKETCH OF REFERENCE TIES



Statement of evidence relative to this corner location is on back of page.

I hereby certify that this document and the data contained herein was prepared by me or under my direct supervision.

John Madson
SIGNATURE

2-1-88
DATE

Registration No. 13593

- Land Surveyor, Professional Engineer
- County Surveyor, County Engineer

OFFICE OF THE COUNTY RECORDER

County of Murray

I hereby certify that this document was filed in the Co. Recorders office at 10 A.M. on the 2nd day of February A.D., 19 88

County Recorder James V. Johnson

By _____, Deputy

DOCUMENT NO. _____

Statement of Evidence: S.W. Cor. Sec. 10-108-42, Murray County

The corner was originally established during the Public Land Survey of Skandia Township during the 1860's.

Records from the Murray County Surveyors Book described the corner as a stone marking the government corner.

Records from the Murray County Highway Department described the corner as a P.K. Nail in the bituminous paving over a concrete monument with steel pin. The ties were as follows: 62.81 N.E. = Nail & disc in corner fence post; 63.82 S.E. = N.W. corner of power transformer box; 71.24 S.W. = N.E. edge of steel post for Lutheran Church sign.

On December 14, 1987, I found a P.K. Nail in the bituminous paving in agreement with previous ties.

A handwritten signature in dark ink, appearing to be "D. M. ...", located in the lower right quadrant of the page.